

PROMOTION



RÖHM STEEL ICONS 2017-3

Valid until 31. March 2018

RÖHM
driven by technology

Drill chucks with mount SDS plus and Hex

A01

EXTRA-RV 80 with SDS plus mounting shank and radial locking, metal design



Item no.	Size	Clamping capacity mm	Mount	Retaining ring	External Ø mm	Length opened without SDS mount mm	Length closed without SDS mount mm	Gross Price	Promotion Price
1288566	13	1,5-13	1/2"-20 / SDS plus	•	42,7	64,5	72,4	50,00 €	40.00 €

Use exclusively with hammer function deactivated

Buy online now:
EXTRA-RV 80 with SDS plus mounting shank

A01

EXTRA-RV 80 for impact screwdriver mounting 1/4" Hex, plastic design, specially suited for impact screwdrivers (eccentricity)



Item no.	Size	Clamping capacity mm	Mount	Retaining ring	External Ø mm	Length opened without hexagon mm	Length closed without hexagon mm	Gross Price	Promotion Price
1178269	10	1-10	1/4" Hex	•	42,7	55	63,1	35,60 €	28.50 €

Buy online now:
EXTRA-RV 80 with Hex mounting

A01

PRIMA with SDS plus adapter



Item no.	Clamping capacity mm	Mount	External Ø mm	Length opened without SDS mount mm	Length closed without SDS mount mm	Key size	Gross Price	Promotion Price
1288568	1,5-13	1/2"-20 / SDS plus	42,9	59	74	S2A	35,50 €	28.40 €

Only with switched-off impact function

Buy online now:
PRIMA with SDS plus adapter

A01

PRIMA 6L, hexagon mounting



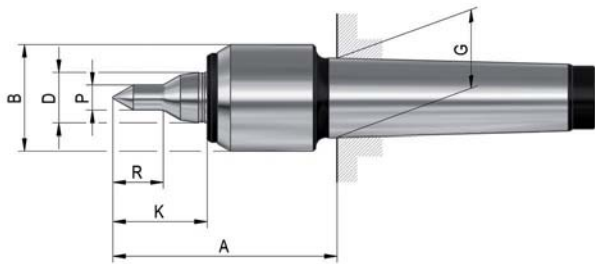
Item no.	Size	Type	Clamping capacity mm	Mount	External Ø mm	Length opened mm	Length closed mm	Key size	Gross Price	Promotion Price
368292	6	L	0,5-6,5	hexagon	29,3	42,5	53	S14	30,40 €	24.30 €

For clockwise and counterclockwise rotation

Only with switched-off impact function

Buy online now:
PRIMA 6L with hexagon mounting

Slim - profiled, extended centre point



APPLICATION

For counter-clamping workpieces on turning and grinding machines. Especially suited for cramped work area between centre point and workpiece.

TYPE

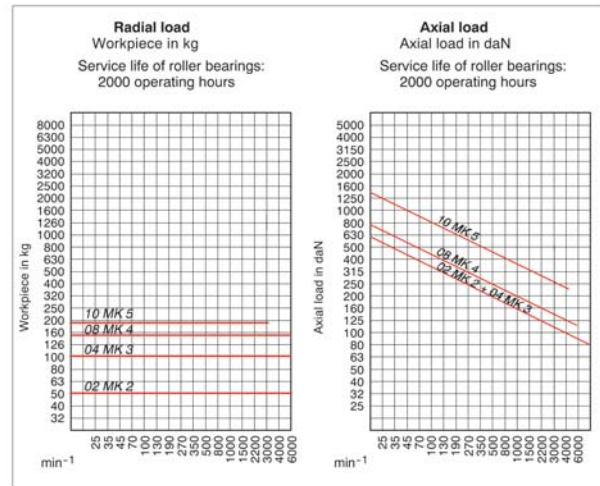
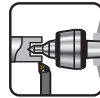
Compact design with minimum casing diameter. With extended and profiled centre point.

CUSTOMER BENEFITS

- ① Enlarged work area and better workpiece accessibility thanks to narrow casing diameter and extended and profiled centre point
- ② Maximum rigidity at high speeds thanks to compact design
- ③ Maximum concentricity deviation of 0.008 mm for maximum precision

TECHNICAL FEATURES

- Body hardened and ground
- Tip angle 60°



A06

Slim with small casing diameter and profiled and extended centre point, body hardened and ground - tip angle 60°

Item no.	1241695	1243505	1243507	1243509
Promotion Price	187.00 €	196.00 €	261.00 €	378.00 €
Gross Price	221.00 €	231.00 €	308.00 €	445.00 €
Mount MT	2	3	4	5
Size	02	04	08	10
A mm	73	74	88,5	119
B mm	32	34	42	58
D mm	15	15	20	30
G mm	17,78	23,825	31,267	44,399
K mm	29,5	32	37,5	51,5
P mm	6	8	10	12
R mm	12	16	20	26
Workpiece weight max. kg	50	100	150	180
Concentricity deviation max. mm	0,008	0,008	0,008	0,01
Speed max. min ⁻¹	7000	7000	6300	4300
Weight approx. g	320	460	1000	2600
Spare live centres	1241758	1241759	1241760	1241761



Buy online now:
Live centre Slim with profiled and extended centre point

KRF - without base plate

Lever scroll chuck KRF



APPLICATION

3- and 4-jaw chuck for positioning and conveying workpieces, e.g. on measuring machines.

TYPE

Lever scroll chuck in cast iron version. 3-jaw and 4-jaw version.

CUSTOMER BENEFITS

- ⊕ Easy clamping of the workpiece by turning the clamping ring
- ⊕ Sizes 125 - 200: 4 setscrews for fine adjustment
- ⊕ Cast iron body
- ⊕ Jaws in chuck ground out for concentricity

TECHNICAL FEATURES

- 6 jaw chuck for grinding twist drills on request available

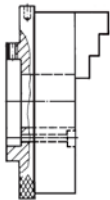


Buy online now:
KRF, 3-jaws



Buy online now:
KRF, 4-jaws

A09
Lever scroll chuck KRF, cylindrical centre mount



Size	ZA mm	Through-hole mm	3-jaw chuck with inside and outside jaw	Promotion Price	4-jaw chuck with inside and outside jaw	Promotion Price	Torque Nm	Total clamping force kN
70	48	16	148793 ¹⁾	351.00 €	148794	413.00 €	12	2,5
110	75	26	148757	553.00 €	148772	648.00 €	26	3,2
125	70	35	150757	628.00 €	150758	738.00 €	36	3,5
160	78,5	52	150759	804.00 €	150760	949.00 €	50	4
200	115	64	150761	1,005.00 €	150762	1,180.00 €	60	4,5

¹⁾ Jaws reversible
 Sizes 125 - 200: 4 setscrews for fine adjustment
 Further sizes and mountings available on request

KRF - with base plate



APPLICATION

3-jaw chuck with base plate for positioning and conveying workpieces, e.g. on measuring machines.

TYPE

Lever scroll chuck in cast iron version.

CUSTOMER BENEFITS

- ⊕ Easy clamping of the workpiece by turning the clamping ring
- ⊕ Sizes 125 - 200: 4 setscrews for fine adjustment
- ⊕ Cast iron body

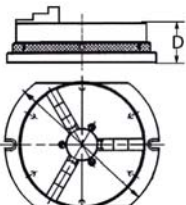
TECHNICAL FEATURES

- Mounted in the chuck with one set of jaws stepped outward (BB)
- One set of jaws stepped inward (DB)
- Size 70 with reversible jaws
- Mounting screws



Buy online now:
KRF Lever scroll chuck with base plate

A09
Lever scroll chuck with base plate, 3-jaw-chuck cast iron body



Item no.	Size	Through-hole mm	D mm	Torque Nm	Total clamping force kN	Promotion Price
150595 ¹⁾	70	16	46,4	12	2,5	528.00 €
150596	110	26	50	26	3,2	830.00 €
150597	125	35	59	36	3,5	949.00 €
150598	160	52	59	50	4	1,210.00 €
150599	200	64	69	60	4,5	1,510.00 €

¹⁾ Jaws reversible
 Further sizes and mountings available on request

KFD-HS - 3-jaw, serration 90°



APPLICATION

Premium power chucks with through-hole for maximum speeds with simultaneously low centrifugal force losses.

TYPE

Power chuck available with cylindrical center mount or short taper mount. 3-jaw version with serration 90° or tongue and groove. 2-jaw version with serration 90°.

CUSTOMER BENEFITS

- ③ Low centrifugal force losses and high speeds thanks to special wedge hook system with annular piston
- ③ Larger than average through-hole for wide range of workpieces
- ③ Maximum precision thanks to rigid chuck construction
- ③ If necessary quick conversion to a different spindle nose by simply exchanging the centering adapter

TECHNICAL FEATURES

- Universal construction of the piston connection (piston does not project into the spindle bore area, even with the piston position moved back)
- Long jaw guide
- Clamping inserts can be used for bar machining (special version)

Included in the scope of delivery:

Chuck, chuck and jaw mounting screws, mounting wrench, slot nuts (without top jaws)

C 15

3-jaw power chuck KFD-HS, with tightening thread, serration 90°

Cylindrical center mount, connection dimensions in acc. with DIN 6353/short taper mount (KK) for ISO 702-1 (DIN 55026/55021)

Item no.	149406	149405	144258	142690	143692	142478	144259	143893	143888	142479
Promotion Price	1,385.00 €	1,520.00 €	1,770.00 €	1,945.00 €	1,770.00 €	1,945.00 €	1,975.00 €	2,165.00 €	1,975.00 €	2,165.00 €
Gross Price	1,540.00 €	1,690.00 €	1,970.00 €	2,165.00 €	1,970.00 €	2,165.00 €	2,195.00 €	2,410.00 €	2,195.00 €	2,410.00 €
Size	110	110	140	140	160	160	175	175	200	200
Jaw travel B mm	3,2	3,2	3,2	3,2	4	4	4	4	5	5
C mm	78	86	88	92	102	108	102	108	107	112
Mount D	ZA 60	KK 4 ¹⁾	ZA 120	KK 5	ZA 140	KK 5	ZA 140	KK 5	ZA 170	KK 6
Wedge stroke K mm	12	12	12	12	15	15	15	15	18,5	18,5
Through hole M max. mm	26	26	37	37	46	46	56	56	66	66
Q mm	M34x1,5	M34x1,5	M44x1,5	M44x1,5	M54x1,5	M54x1,5	M65x1,5	M65x1,5	M74x1,5	M74x1,5
Maximum draw bar pull kN	18	18	25	25	35	35	40	40	48	48
Max. total clamping force kN	48	48	70	70	86	86	95	95	110	110
Max. admissible speed min ⁻¹	8500	8500	8000	8000	8000	8000	7000	7000	6500	6500
Moment of inertia J kgm ²	0,007	0,007	0,022	0,022	0,0415	0,0415	0,057	0,057	0,1	0,1
Weight without jaws approx. kg	5	5	9	9	12	12	15	15	20	20

¹⁾ ISO 702-1 (DIN 55026) only (DIN 55021 on request)

Item no.	161725	144260	143726	142691	144261	143748	144262	143749	144263	143750	143751
Promotion Price	2,585.00 €	2,585.00 €	2,845.00 €	2,845.00 €	3,160.00 €	3,475.00 €	3,160.00 €	3,475.00 €	6,210.00 €	6,860.00 €	6,860.00 €
Gross Price	2,875.00 €	2,875.00 €	3,165.00 €	3,165.00 €	3,515.00 €	3,865.00 €	3,515.00 €	3,865.00 €	6,905.00 €	7,625.00 €	7,625.00 €
Size	250	250	250	250	315	315	315	315	400	400	400
Jaw travel B mm	6,2	6,2	6,2	6,2	6,2	6,2	6,2	6,2	7,5	7,5	7,5
C mm	128	128	130	130	128	130	139	143	156	156	156
Mount D	ZA 170	ZA 220	KK 6	KK 8	ZA 220	KK 8	ZA 300	KK 11	ZA 380	KK 11	KK 15
Wedge stroke K mm	23	23	23	23	23	23	23	23	28	28	28
Through hole M max. mm	66	86	66	86	86	86	108	108	165	126	165
Q mm	M74x1,5	M94x1,5	M74x1,5	M94x1,5	M94x1,5	M94x1,5	M120x1,5	M120x1,5	M172x3	M132x1,5	M172x3
Maximum draw bar pull kN	65	65	65	65	80	80	80	80	110	110	110
Max. total clamping force kN	150	150	150	150	180	180	180	180	250	250	250
Max. admissible speed min ⁻¹	5000	5000	5000	5000	4200	4200	4200	4200	3150	3150	3150
Moment of inertia J kgm ²	0,35	0,35	0,35	0,35	0,74	0,74	0,74	0,74	2,4	2,4	2,4
Weight without jaws approx. kg	40	40	40	40	56	56	56	56	120	120	120

¹⁾ ISO 702-1 (DIN 55026) only (DIN 55021 on request)

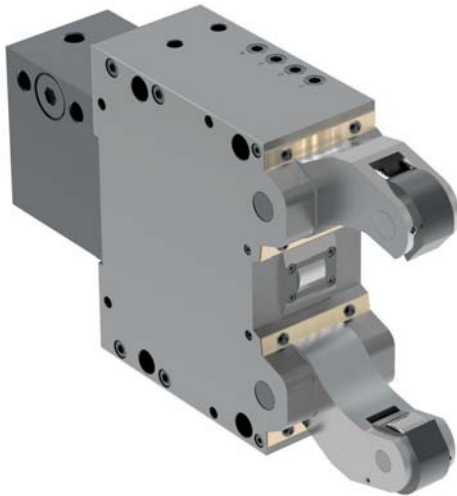


Buy online now:
KFD-HS, serration 90°, cylindrical center mount



Buy online now:
KFD-HS, serration 90°, short taper mount

SLZN - standard design



APPLICATION

Support of slender shafts for rational turning and end machining.

TYPE

Standard version with cylinder mounted at rear.

CUSTOMER BENEFITS

- ④ Large clamping range without change elements
- ④ Operational safety thanks to safety valve, even if pressure drops (SLZ-047 optional)
- ④ Compact and sturdy design for variable use
- ④ High centering precision and repeatability thanks to proven cam lever system
- ④ Resilient chip protection for optimal workpiece wiping (for version „with chip protection“)
- ④ Purge air connection to prevent penetration of dirt inside the steady rest

TECHNICAL FEATURES

- Central lubrication or manual lubrication possible, depending on the operating conditions
- Standard version available with cylindrical or convex rollers
- Available with and without chip protection
- Prepared for end position check, except SLZ-047 (limit switch not included in the scope of delivery)

C 15

Self-centering steady rests SLZN - oil or air operated with mounted cylinder

Clamping ranges Type	SLZ 047	SLZN 067	SLZN 08105
Clamping range - with chip protection mm	15-62	11-70	16-101
Clamping range - without chip protection mm	4-70	6-75	8-105
Max. radial clamping range - d_3 mm	70	79	105
With chip protectors RZ	685751	1685567	1685571
Promotion Price	2,790.00 €	2,790.00 €	3,420.00 €
With chip protectors RB	685752	1685568	1685572
Promotion Price	2,790.00 €	2,790.00 €	3,420.00 €
Without chip protectors RZ	685753	1685569	1685573
Promotion Price	2,610.00 €	2,610.00 €	3,240.00 €
Without chip protectors RB	685754	1685570	1685574
Promotion Price	2,610.00 €	2,610.00 €	3,240.00 €
Clamping arm width M mm	20	28	35
Roller width N mm	11,5/9	17,5/14	20,5/18
Weight kg	7	10	14,5
Cylinder-Ø	C40	C 35	C50
Cylinder surface area cm ²	12,5	9,6	19,6
Max. operating pressure bar	25	54	53
Operating pressure bar	6-20	6-30	8-30
Clamping force per roller at max. operating pressure N	830	960	1960
Max. permissible clamping force per roller N	1040	1700	3500
Clamping force per roller at 20 bar N	830	640	1300
Centering accuracy over the entire clamping range mm	0,02*	0,02*	0,02*
Repeat accuracy for the same clamping-Ø at the same operating pressure mm	0,005	0,005	0,005
Max. roller peripheral speed m/min	800	800	800
Max. roller peripheral speed at half the max. clamping force per roller m/min	900	900	950
Displacement of the geometrical workpiece center in the event of a 20-70% change in the operating pressure /at constant force) mm	0,02	0,02	0,02

* At constant pressure and clamping force



Buy online now:
Steady rest SLZN standard design

F-senso spindle



Version 1:
F-senso spindle 0-15 kN

Version 2:
F-senso spindle 10-100 kN

APPLICATION

Version 1: Measuring device for SK and HSK spindles of size SK 30; HSK (A) 20, 25, 32, 40.

Version 2: Measuring device for SK and HSK clamping systems of sizes SK 40, 50, 60; HSK (A) 50, 63, 80, 100, 125 and clamping head SPK.

TYPE

Version 1: Measuring range 0-15 kN.

Version 2: Measuring range 10-100 kN.

CUSTOMER BENEFITS

- ⊕ Maximum flexibility due to exchangeable adapters for all HSK and steep-taper sizes
- ⊕ High user-friendliness due to intuitive operation and delivery in a practical case
- ⊕ Simulation of the tool and spindle tolerances possible by a scaled ring

Delivery includes:

- F-senso spindle force measurement device
- Case with space for adapter
- Mounting bar
- Battery

C 15

Pull-in force measurement device F-senso spindle 0-15 kN



Item no.	1266341
Promotion Price	2,440.00 €
Gross Price	2,720.00 €
Measuring range / Clamping force kN	0-15 kN
Accuracy	0,25% (f.s.)
Dimensions (base unit)	ca. Ø 66 mm; L=172 mm



Buy online now:
F-senso spindle, 0-15 kN

C 15

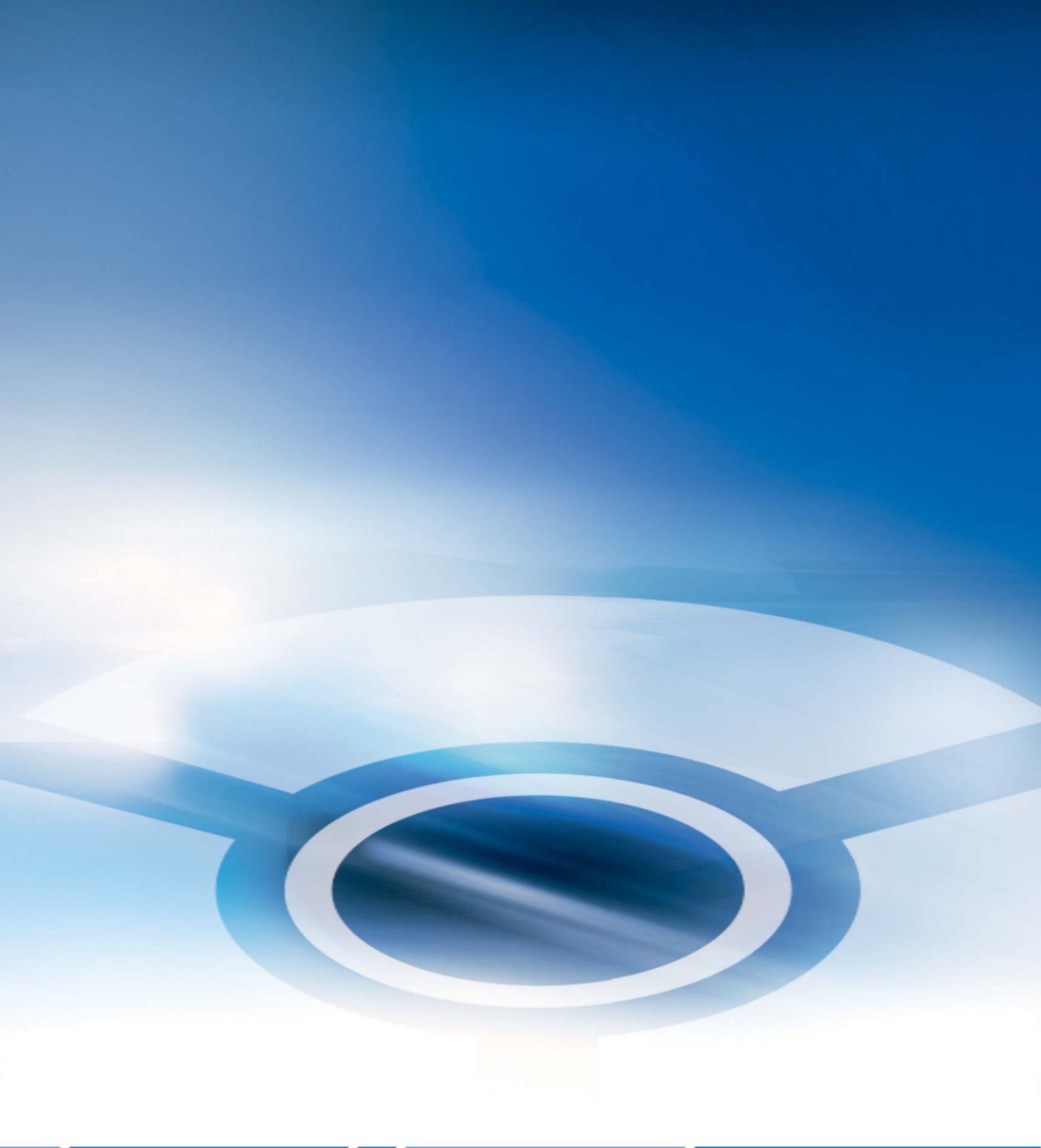
Pull-in force measurement device F-senso spindle 10-100 kN



Item no.	1255729
Promotion Price	2,440.00 €
Gross Price	2,720.00 €
Measuring range / Clamping force kN	10-100 kN
Accuracy	0,25% (f.s.)
Dimensions (base unit)	ca. Ø 66 mm; L=189 mm



Buy online now:
F-senso spindle, 10-100 kN



RÖHM GmbH

Heinrich-Röhm-Straße 50

89567 Sontheim/Brenz

Germany

Tel +49 7325 16 0

Fax +49 7325 16 510

info@roehm.biz

www.roehm.biz



Id.-Nr. 1242443 / 0917 B